



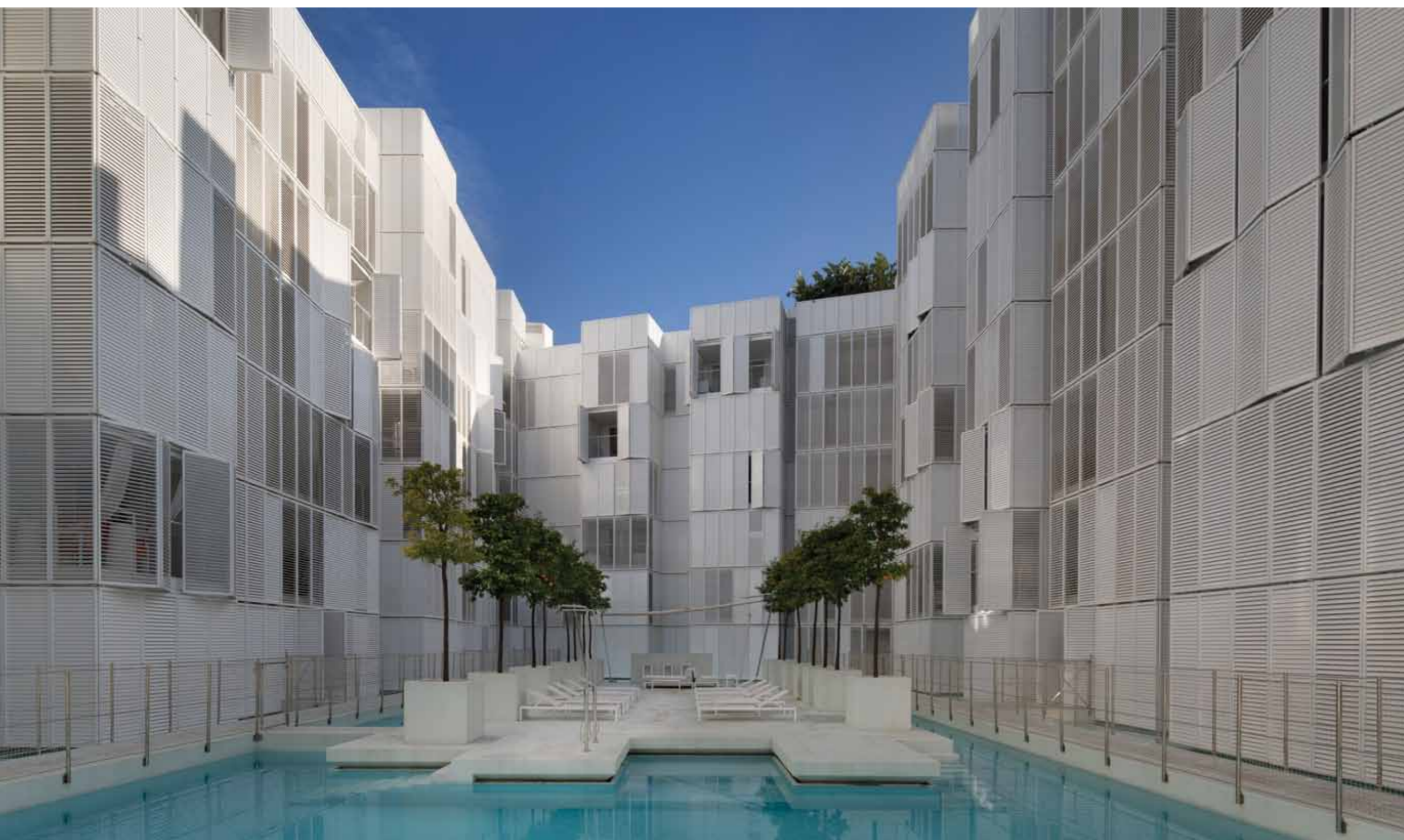
Las Boas Resort
IBIZA



Patio Blanco

There's nowhere quite
like Patio Blanco. Elegant,
sophisticated and totally
unique, Patio Blanco is
somewhere that truly has to be
experienced to be believed.

Unique Elegance





A Mediterranean Eden

Stay in Patio Blanco and don't be surprised if you feel like you stepped into a little piece of heaven – The complex's clean, crisp lines, pure-white colour theme and tranquil atmosphere will make you feel like you're in some kind of Mediterranean Eden.

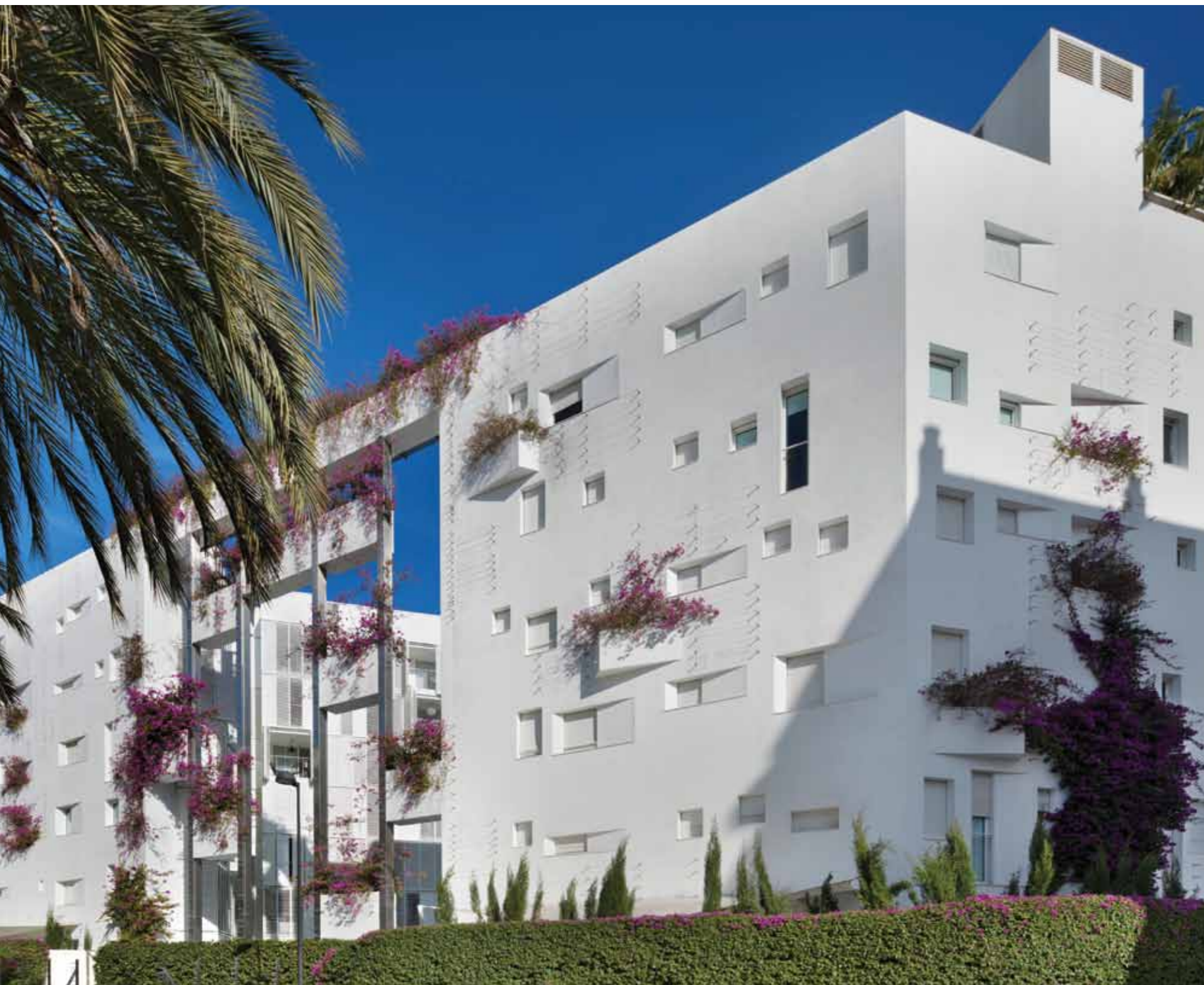
Patio Blanco is designed by world-famous architect Jean Nouvel and is based on a traditional Andalusian design with a simple patio area forming the heart of the building. However this central area is more than just a patio, it also acts as a courtyard and entrance hall to the complex. Central to the courtyard is an aquamarine pool encompassing a range of white gloss walkways connecting the central 'floating' patio with the rest of the complex.



Location, Location, Location

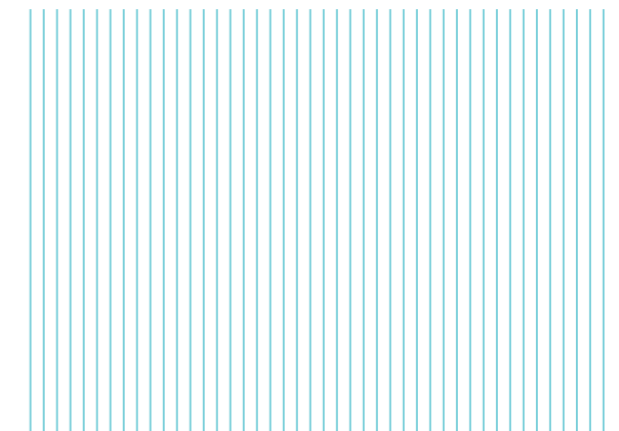
Another great feature of Patio Blanco is its location. Marina de Ibiza and Hotel Pacha both face the complex and Ibiza town and Marina Botafoch are both just minutes away. If clubbing is more your thing, then Cipriani, Pacha and Lio and Blue Marlin Marina are all a short walk. Fifteen minutes walk away is Dalt Vila and Talamanca beach, a long, curved stretch of sand ideal for soaking up the sun.

The beauty of Patio Blanco's unique design, is that after you've enjoyed terrace views of the courtyard, you can just as easily create a more private and intimate space by closing the apartment's aluminium shutters to enclose both the apartment and its terrace.



Stunning Botanical Display

If you're not already bowled over by Patio Blanco, the building's design also includes a giant vertical garden filled with jasmine and bougainvillea which runs down one side of the building. Not only does this create a stunning botanical display, but it also offers up an exhilarating and intoxicating scent, giving your senses just something else to feast upon.





Fluid Spaces with Incredible Finesse and Lightness

This flexibility runs throughout each of Patio Blanco's apartments, thanks to a tailored design which offers you the opportunity to customise your apartment to your needs. Whether you want to an open plan feel to your apartment or more distinct, separated living areas Patio Blanco offers you a fluid space, ready for whatever you require to make the most of your stay. Not only that, but each apartment is also fitted with all the necessities you need to enjoy your stay including kitchen, air conditioning/heating, intercom, cable TV and internet access.

1032



IDEAL FOR GROUPS OF 4 TO 6

Beds: 2 king size

Occupancy: 6 adults

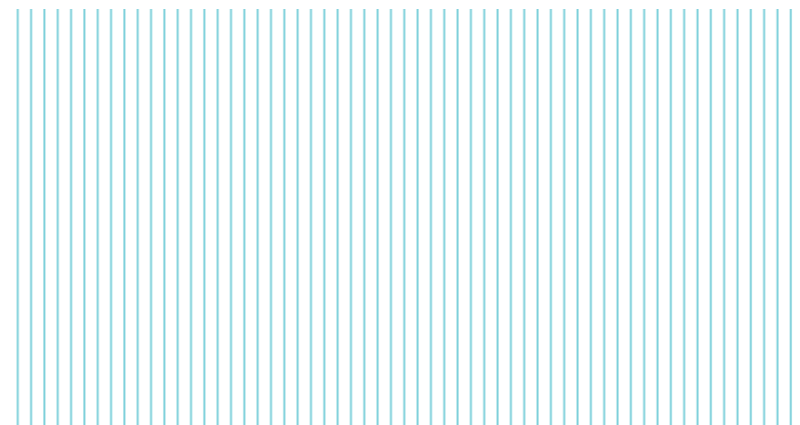
Extra Bed: 1 sofa bed in living room

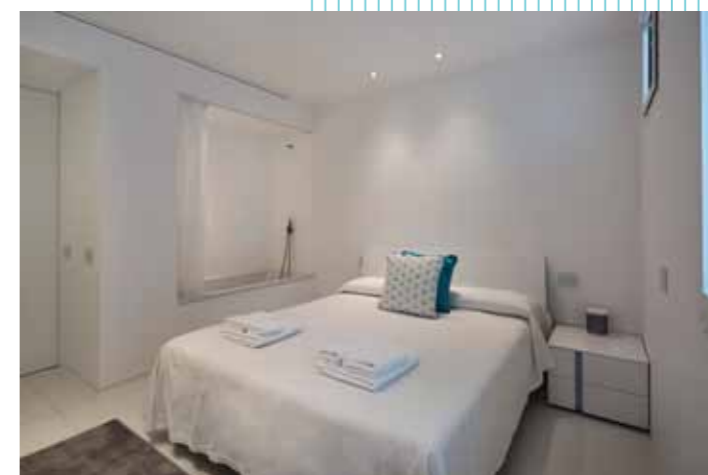
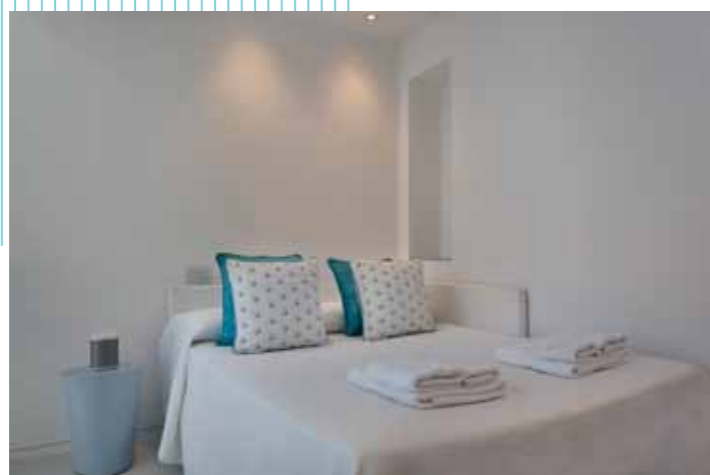
View: pool and garden

Size: 74 m² + terrace 7 m²

Bathrooms: 2 full bathroom,
a guest powder room

Location: escalator 3, floor1,
apartment 2





1063



IDEAL FOR GROUPS OF 2 TO 6

Beds: 1 king size and 1 bunk bed

Occupancy: 6 adults

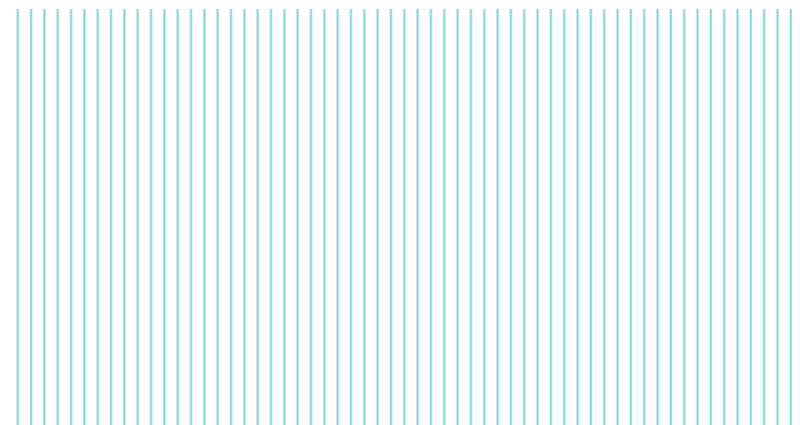
Extra Bed: 1 sofa bed in living room

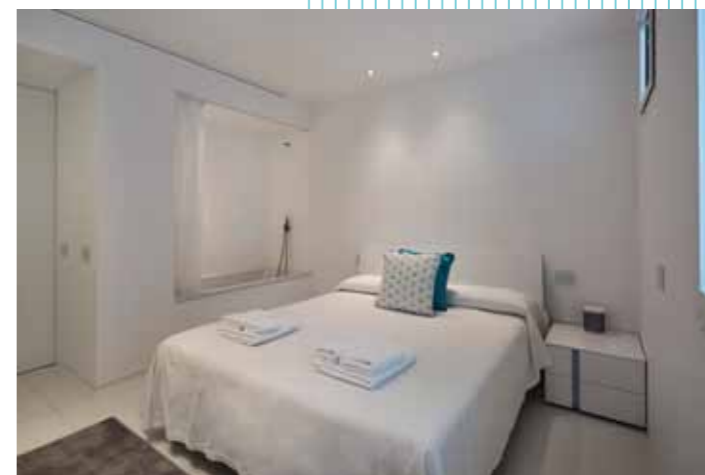
View: pool and garden

Size: 74 m² + terrace 7 m²

Bathrooms: 2 full bathroom,
a guest powder room

Location: escalator 6, floor1,
apartment 3





1071



IDEAL FOR GROUPS OF 4 TO 6

Beds: 2 king size

Occupancy: 6 adults

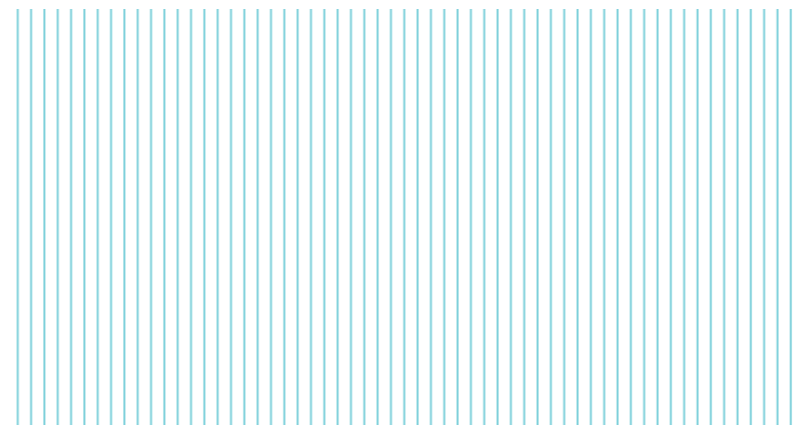
Extra Bed: 1 sofa bed in living room

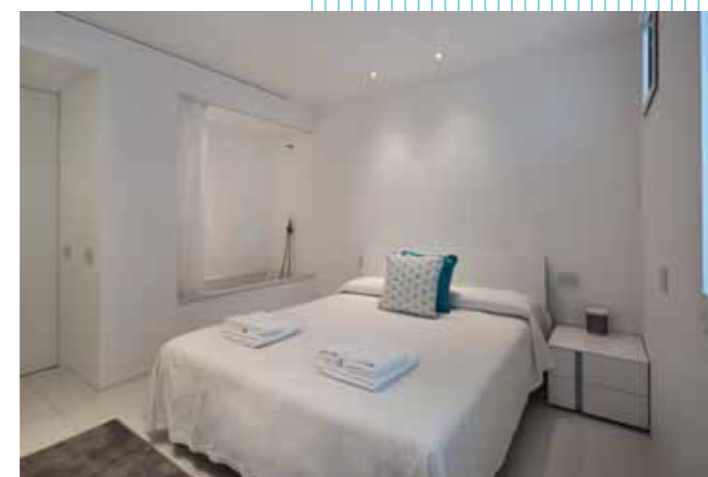
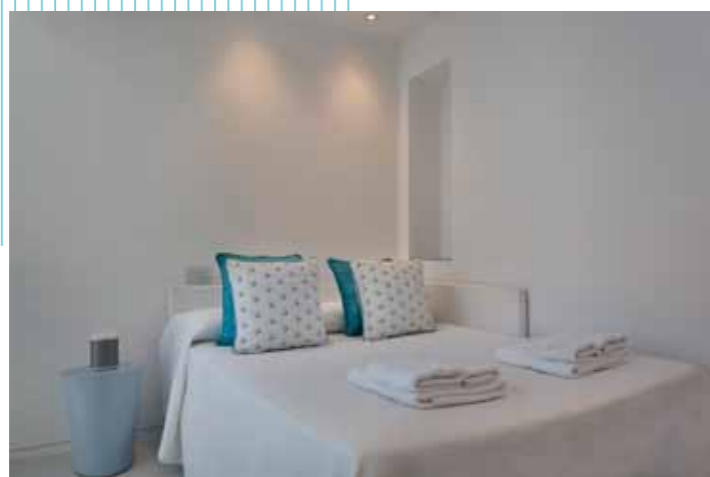
View: pool and garden

Size: 74 m² + terrace 7 m²

Bathrooms: 2 full bathroom,
a guest powder room

Location: escalator 7, floor1,
apartment 1





1072



IDEAL FOR GROUPS OF 2 TO 4

Beds: 1 king size

Occupancy: 4 adults

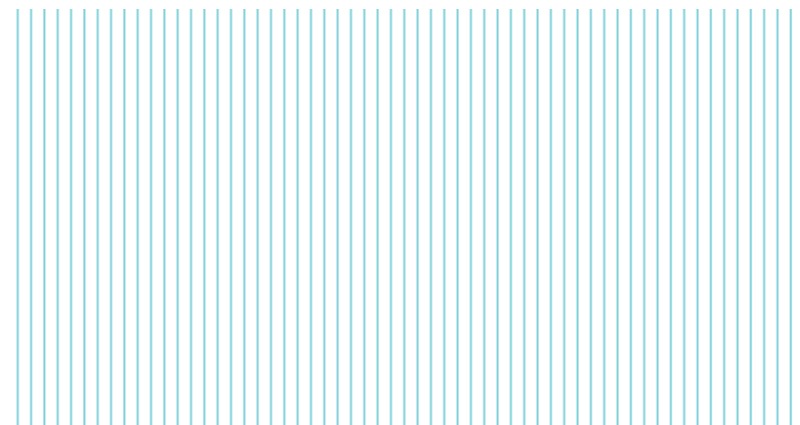
Extra Bed: 1 sofa bed in living room

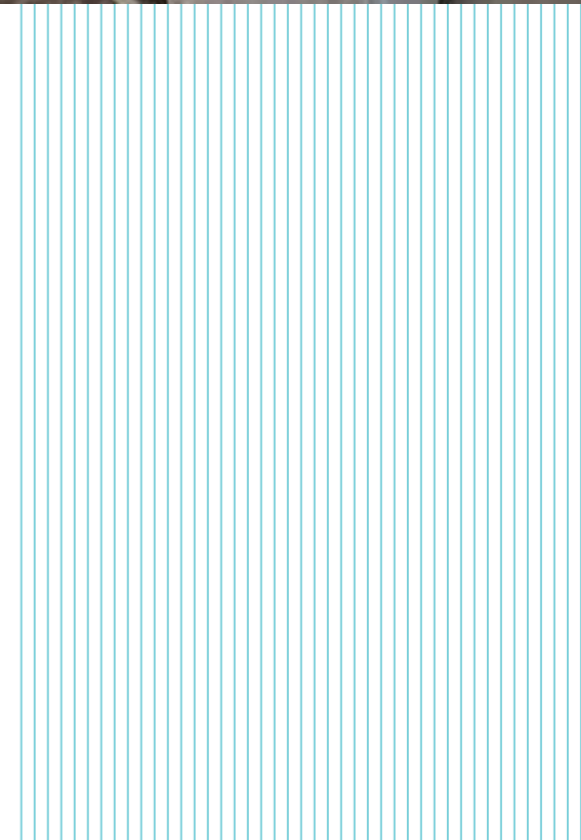
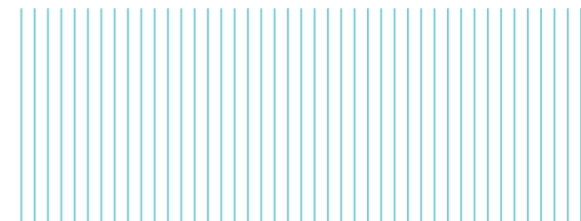
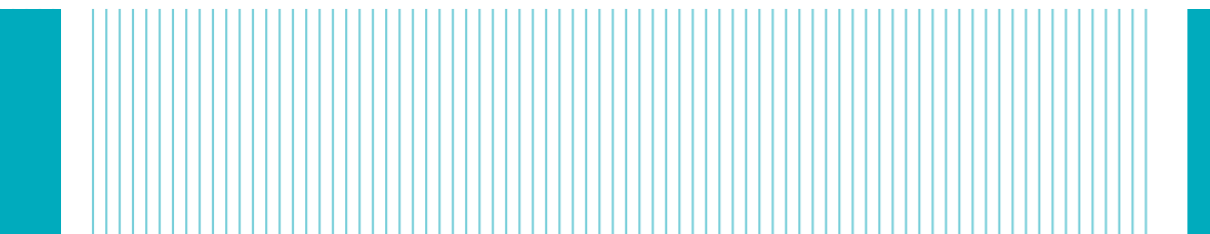
View: pool and garden

Size: 77 m² + terrace 14 m²

Bathrooms: 1 full bathroom,
a guest powder room

Location: escalator 7, floor 1,
apartment 2





2014



IDEAL FOR GROUPS OF 2 TO 4

Beds: 1 king size

Occupancy: 4 adults

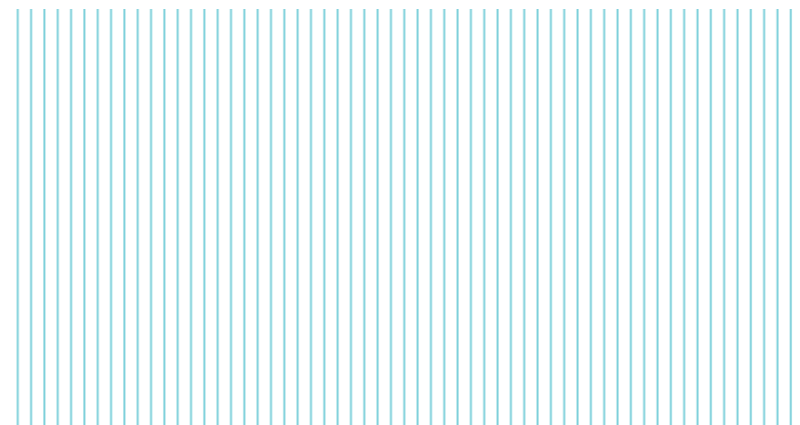
Extra Bed: 1 sofa bed in living room

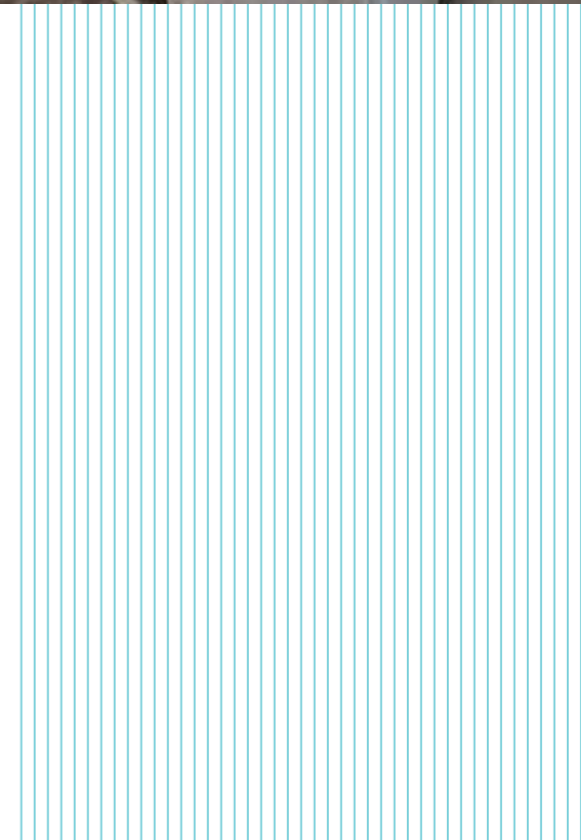
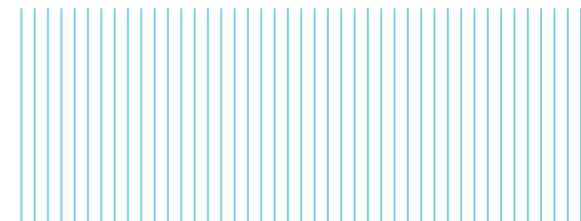
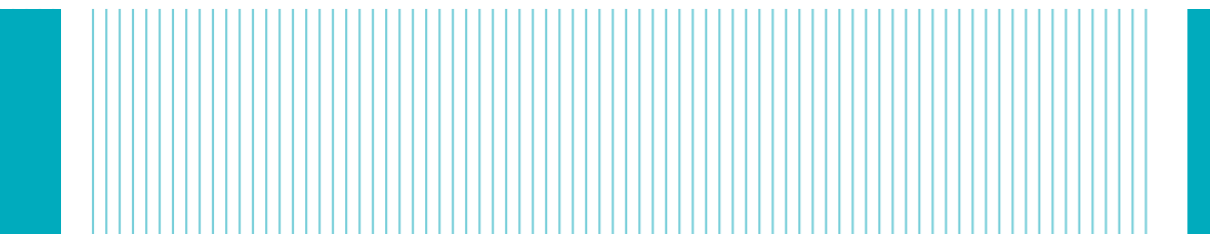
View: pool and garden

Size: 67 m² + terrace 16 m²

Bathrooms: 1 full bathroom,
a guest powder room

Location: escalator 1, floor 2,
apartment 4





IN-ROOM SERVICES & AMENITIES

GENERAL FEATURES

- Communal area with infinity swimming pool and additional space for socialising
- Roof top sun terrace with sea views to the Mediterranean
- One to two bedroomed apartments
- Car parking spaces within the building
- 24 hour security
- Fully equipped Bulthaup kitchen
- Wireless fiber optic high speed Internet access
- Cable network
- Sonos music system
- Interactive television
- Private entrance

ROOM FEATURES

- Espresso coffee machine with complimentary coffee pods
- In-room safe
- Iron and ironing board on request
- Free telephone for calls in Spain land and mobile
- Refrigerated private bar
- In-room bread toasting service
- In-room Printer and scanner

BED AND BATH

- Down pillows
- Hair dryer
- Hypoallergenic pillows on request

SERVICES AND AMENITIES

- Laundry/dry-cleaning pressing
- Express check-in/check-out
- Private dining room
- Parking
- Daily housekeeping service

CHECK IN TIME & POLICIES

Check In: 3:00 PM

Check Out: 12:00 PM

EARLY ARRIVALS & LATE DEPARTURES

If you expect to arrive early in the day and would like immediate access to your room, we recommend booking the room for the prior night to guarantee immediate access. Similarly, for late departures, reserving an additional night will guarantee access to your guest room until you depart. If you choose not to reserve, we will be glad to store your bags and make our fitness facilities available for you to freshen up.

CANCELLATION POLICY

For details of cancellation policies and deposit requirements, please check at time of booking.

GUARANTEED RESERVATIONS AND DEPOSITS

Please check for full deposit requirements at time of booking.

